



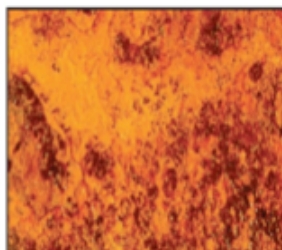
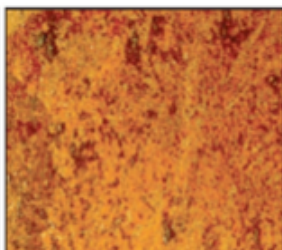
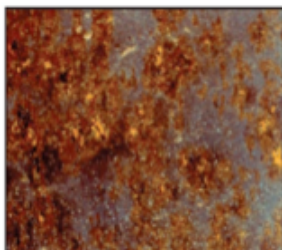
CLEMTEX

Degrees of Blast Cleanliness

Grade A

Grade B

Grade C

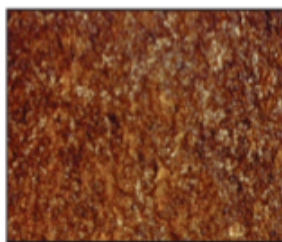
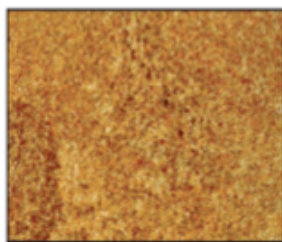
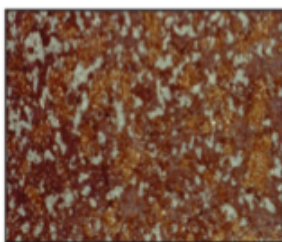


Condition of Steel

Grade A – Steel where mill scale has started to flake and light rusting occurs

Grade B – Steel where all mill scale has flaked off and complete rusting has taken place

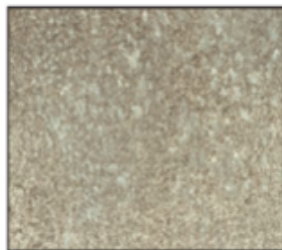
Grade C – Steel where pitting and complete rusting has occurred



Brush Off Blast

Definition: A Brush-Off Blast Cleaned Surface Finish is defined as one from which all oil, grease, dirt, rust scale, loose mill scale, loose rust and loose paint or coatings are removed completely but tight mill scale and tightly adhered rust, paint and coatings are permitted to remain provided that all mill scale and rust have been exposed to the abrasive blast pattern sufficiently to expose numerous flecks of the underlying metal fairly uniformly distributed over the entire surface.

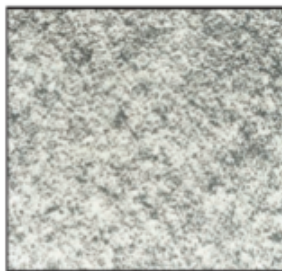
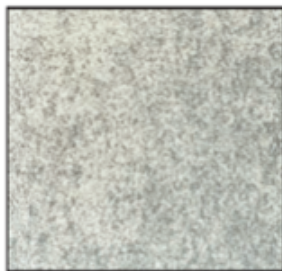
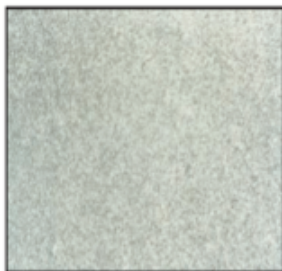
NACE – 4 SSPC-SP-7 SA - 1



Commercial Blast

Definition: A Commercial Blast Cleaned Surface Finish is defined as one from which all oil, grease, dirt, rust scale and foreign matter have been completely removed from the surface and all rust, mill scale and old paint have been completely removed except for slight shadows, streaks, or discolorations caused by rust stain, mill scale oxides or slight, tight residues of paint or coating that may remain; if the surface is pitted, slight residues of rust or paint may be found in the bottom of pits; at least two-thirds of each square inch of surface area shall be free of all visible residues and the remainder shall be limited to the light discoloration, slight staining or tight residues mentioned above.

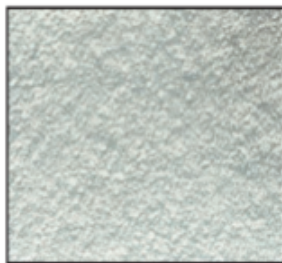
NACE – 3 SSPC-SP-6 SA - 2



Near White Metal Blast

Definition: A Near-White Blast Cleaned Surface Finish is defined as one from which all oil, grease, dirt, mill scale, rust, corrosion products, oxides, paint or other foreign matter have been completely removed from the surface except for very light shadows, very slight streaks or slight discolorations caused by rust stain, mill scale oxides, or light, tight residues of paint or coating that may remain. At least 95 percent of each square inch of surface area shall be free of all visible residues, and the remainder shall be limited to the light discoloration mentioned above.

NACE -2 SSPC-SP-10 SA – 2 ½



White Metal Blast

Definition: A White Metal Blast Cleaned Surface Finish is defined as a surface with a gray-white, uniform metallic color, slightly roughened to form a suitable anchor pattern for coatings. The surface, when viewed without magnification, shall be free of all oil, grease, dirt, visible mill scale, rust, corrosion products, oxides, paint, or any other foreign matter.

NACE – 1 SSPC-SP-5 SA - 3

Houston Office
248 McCarty Dr.
P.O. Box 15214
Houston, TX 77220-5214
(713) 672-8251
Fax (713) 672-6336

Corpus Christi Branch
4750 Westway
P.O. Box 5036
Corpus Christi, TX 78465-5036
(361) 882-8282
Fax (361) 882-6029

Dallas Branch
4770 Gretna
Dallas, TX 75207
(214) 631-0584
Fax (214) 631-5824
1-800-BLAST 97

1-800-CLEMTEX
www.clemtex.com
clemtex@clemtex.com